



Choosing the Right Enclosure

Our handbook guides you through key considerations

WHAT & HOW: What Environment?



- ▶ What's it for?
- ▶ Will you need to disassemble the enclosure?
- ▶ What do you need to mount?
- ▶ Do you need multiple doors?
- ▶ Sidewalls?
- ▶ Power disconnect?
- ▶ What materials are used in the enclosure construction?
- ▶ Are there aesthetic concerns?
- ▶ Cable management?
- ▶ Equipment type, installation type, industry type?

Dusty?

Washdown?

Hot?

Humid?

Indoor?

Outdoor?

Oily?

Cold?

WHERE: What Environment?



▶ Space Restrictions Outside the Enclosure?



Machine Locations



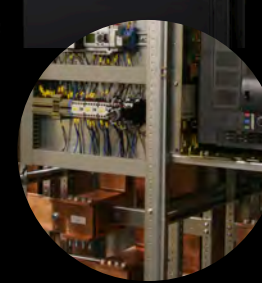
Aisles



Maintenance Needs



Ceilings and Walls



Line of Sight

▶ Temperature Conditions

Most equipment failures are due to high temperatures.



More than **35%** of applications require cooling.

WITHOUT DOWNTIME, DRIVES WILL LAST

8 TO 10 years at 35°C (95°F)

BUT ONLY

2 TO 3 years at 65°C (149°F)

WHO: Ergonomic considerations/User interface



Doors/Panels needed?

Keyboard? Configurable keyboard?

Writing surface?



Get the handbook **Technical Aspects of Enclosures**

[DOWNLOAD NOW](#)

Change for the Better.



ENCLOSURES | POWER DISTRIBUTION | CLIMATE CONTROL | IT INFRASTRUCTURE | SOFTWARE & SERVICES

FRIEDHELM LOH GROUP

rittalenclosures.com | (800) 477-4000

[share on twitter](#) | [share on linkedin](#) | [share on facebook](#)